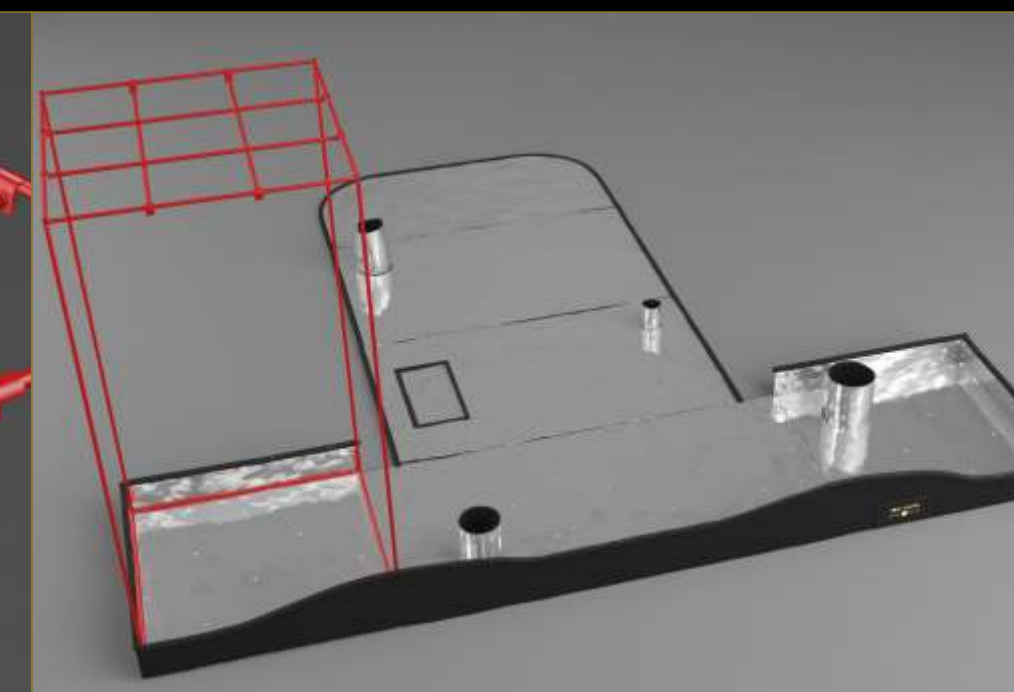
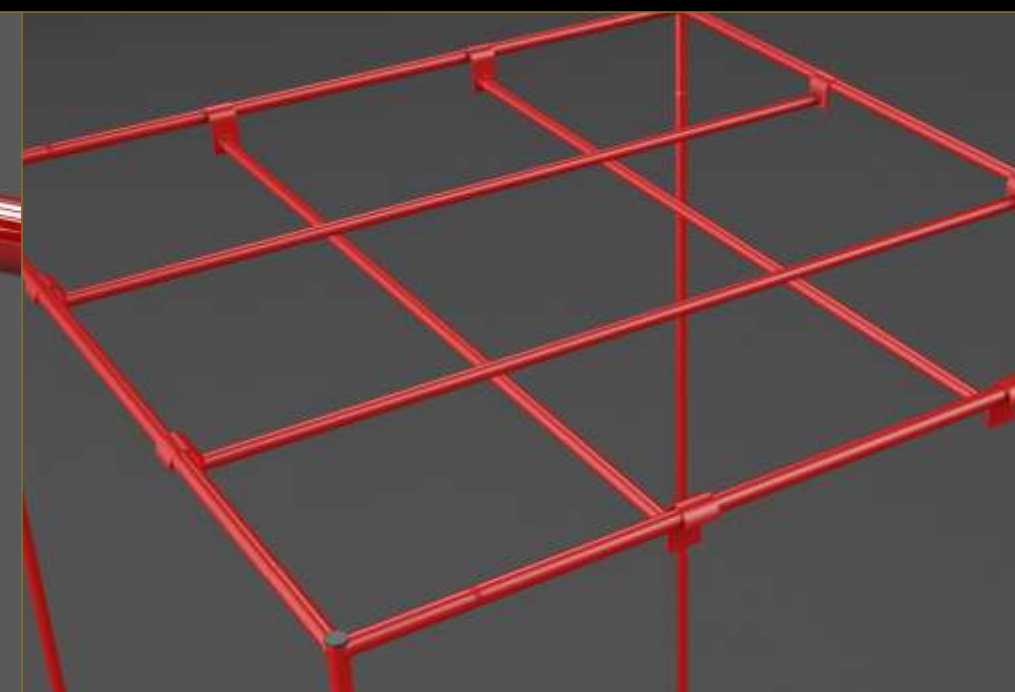
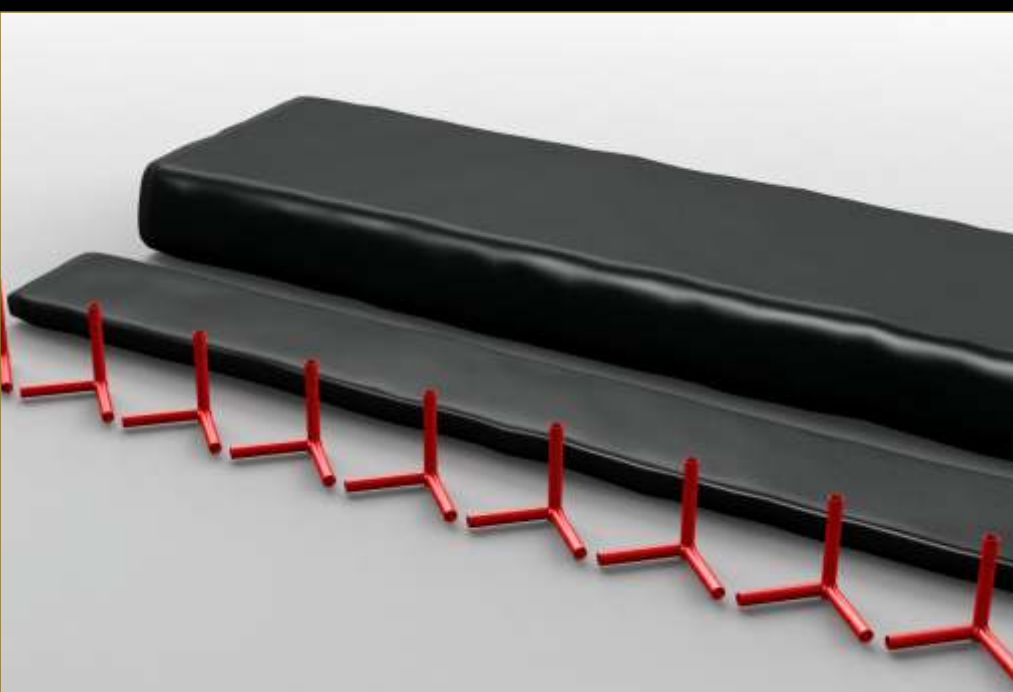


BLACK



ORCHID™



Assembly Instruction Manual

for

hydro-box™

80cm x 80cm x 160cm

Box Contents

← Pole **A** 70cm →



← Pole **B** 70cm →



← Pole **C** 77cm →



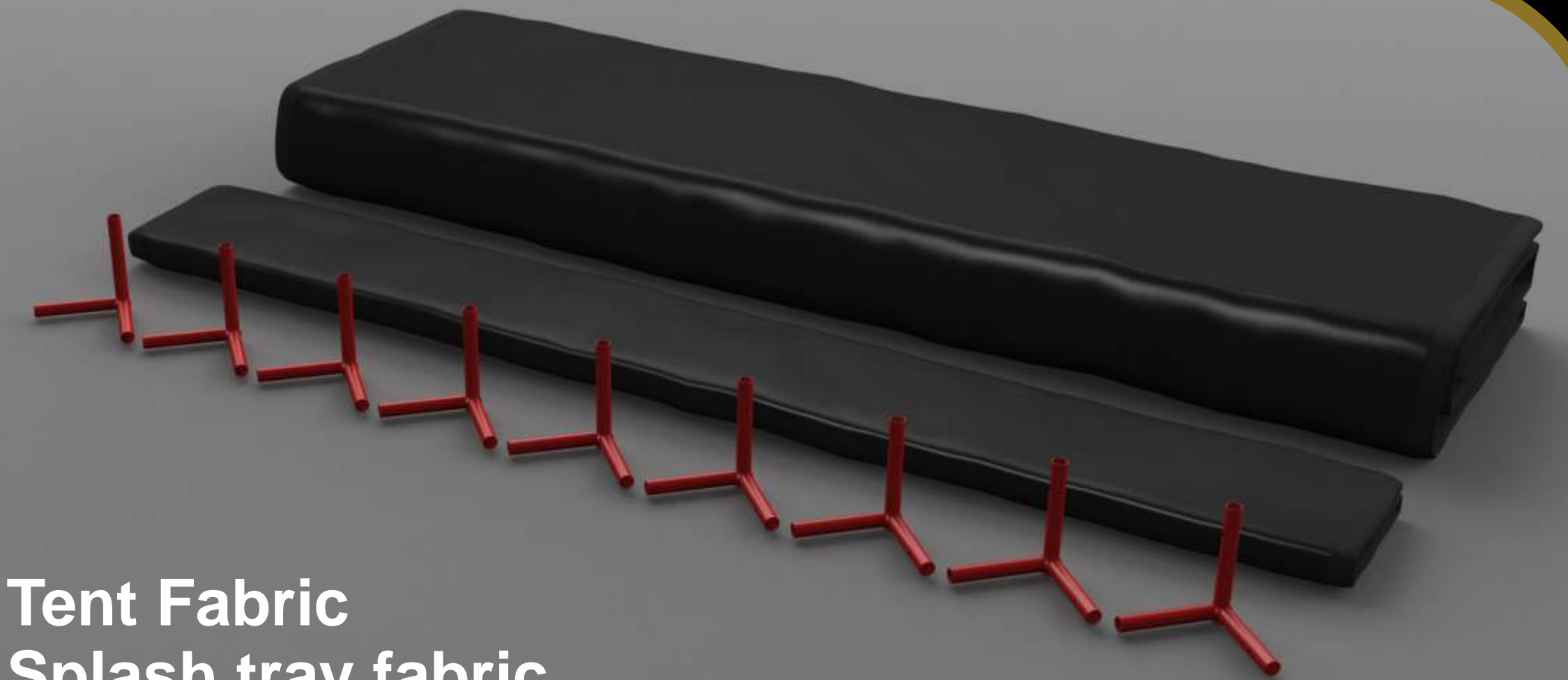
← Pole **D** 77cm →



← Pole **E** 80cm →



← Pole **F** 80cm →



Tent Fabric
Splash tray fabric
Frame Corner joints (inc 1 spare)

Please follow the instructions carefully

hydro-box™
Tent Assembly Instructions

STEP

1

'A' Pole - 80cm

'B' Pole - 80cm

Create the Base of the frame using 4 corner joints, 2 A poles and 2 B poles

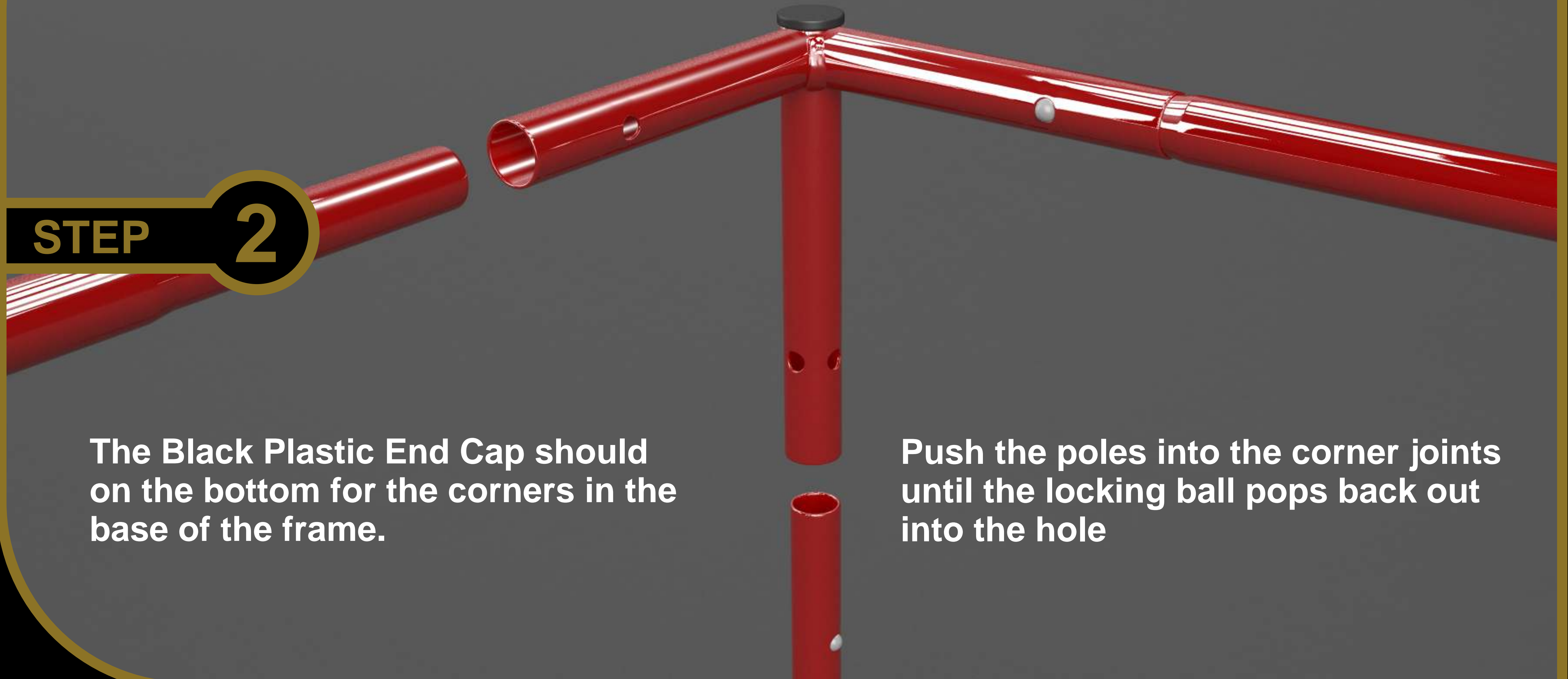
Please note the Black Plastic End Cap should be on the top for the top of the frame.

STEP

2

The Black Plastic End Cap should be on the bottom for the corners in the base of the frame.

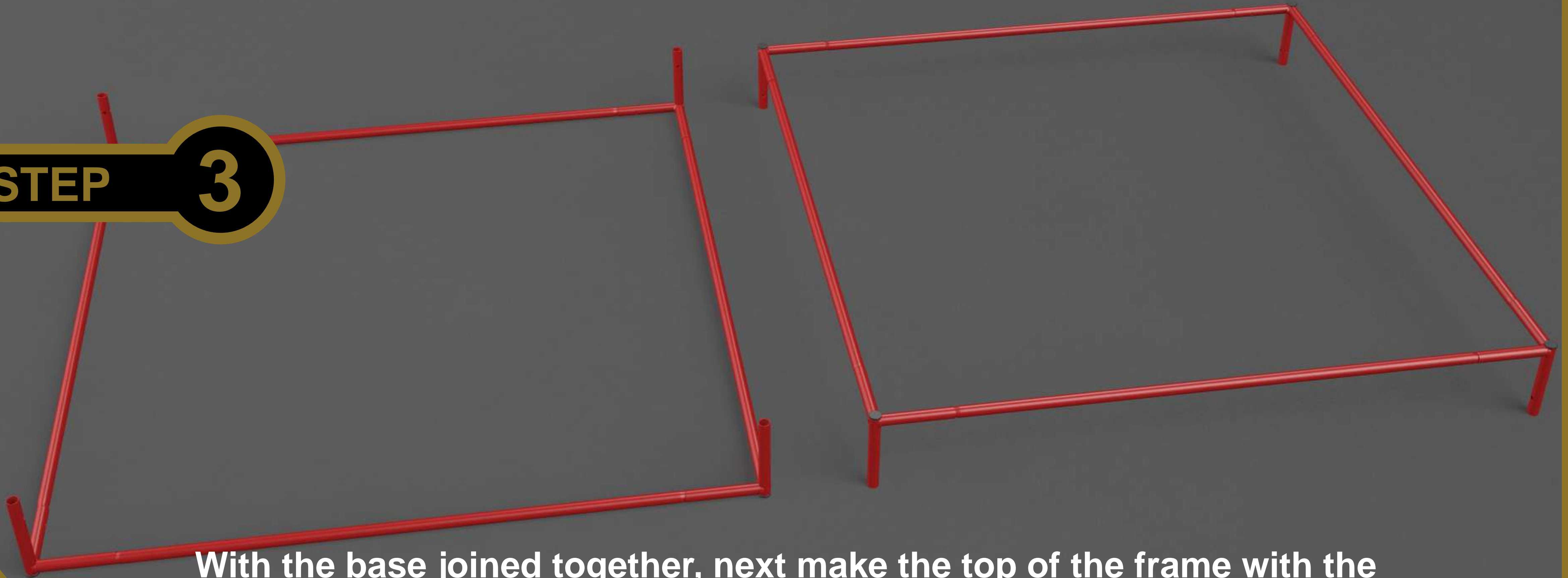
Push the poles into the corner joints until the locking ball pops back out into the hole



Create the base and the top of the tent frame

STEP

3



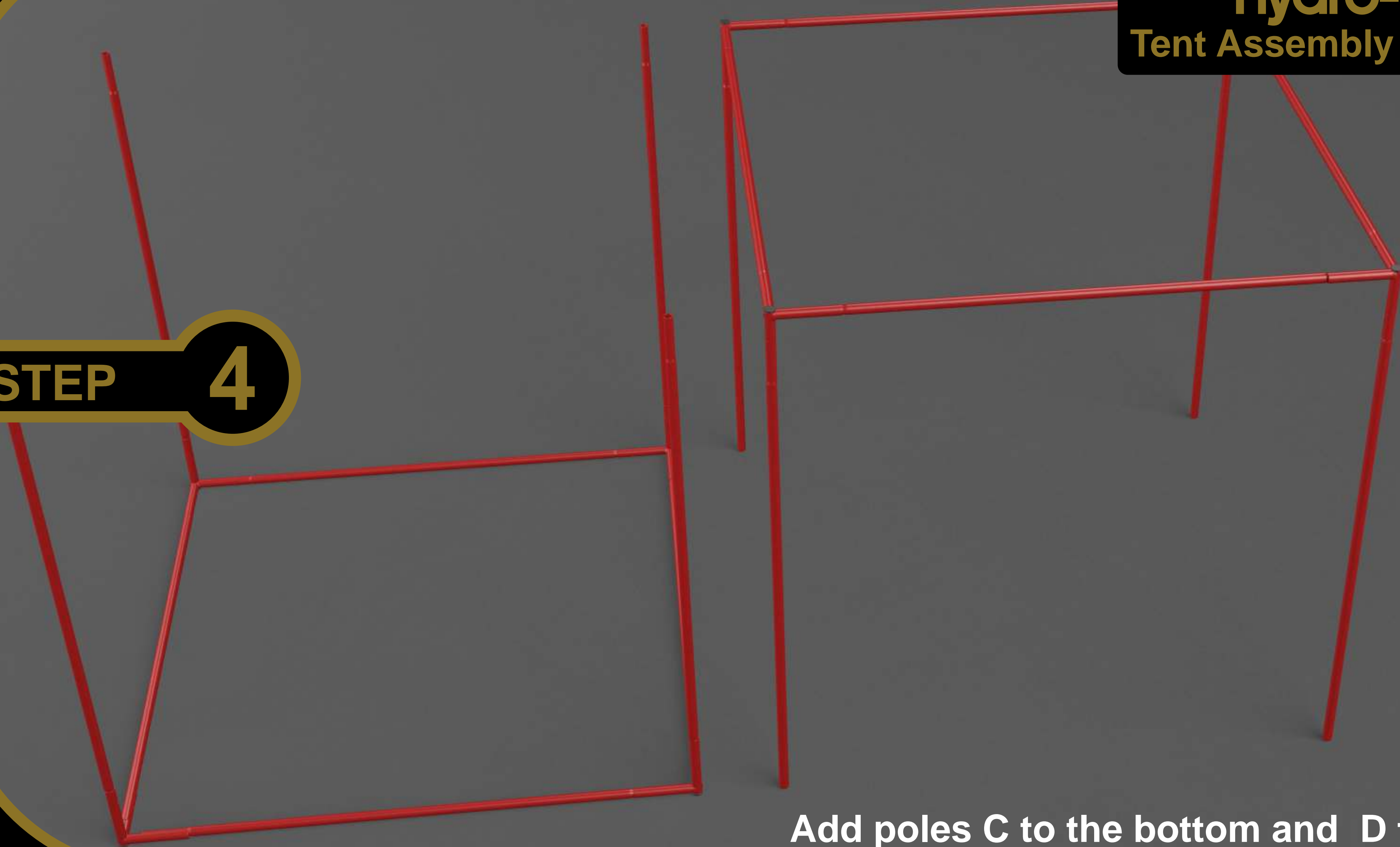
With the base joined together, next make the top of the frame with the other A and B poles

hydro-box™
Tent Assembly Instructions

STEP

4

Add poles C to the bottom and D to the top.



'D' Poles

STEP

5

'C' Poles

Join together the base of the frame with the top of the frame.

Then add poles E and F to the top as seen in Step 6

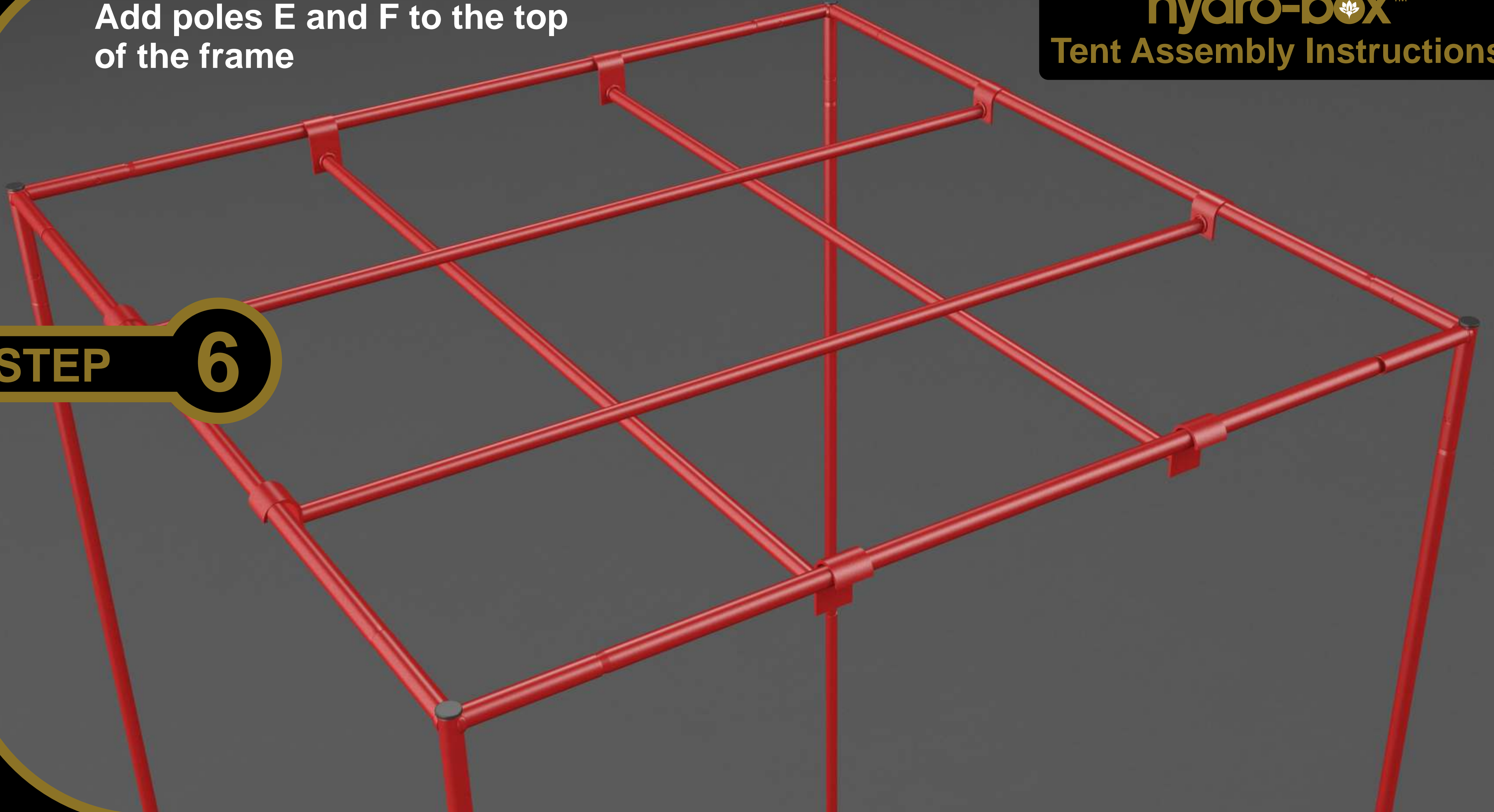


Add poles E and F to the top
of the frame

hydro-box™
Tent Assembly Instructions

STEP

6

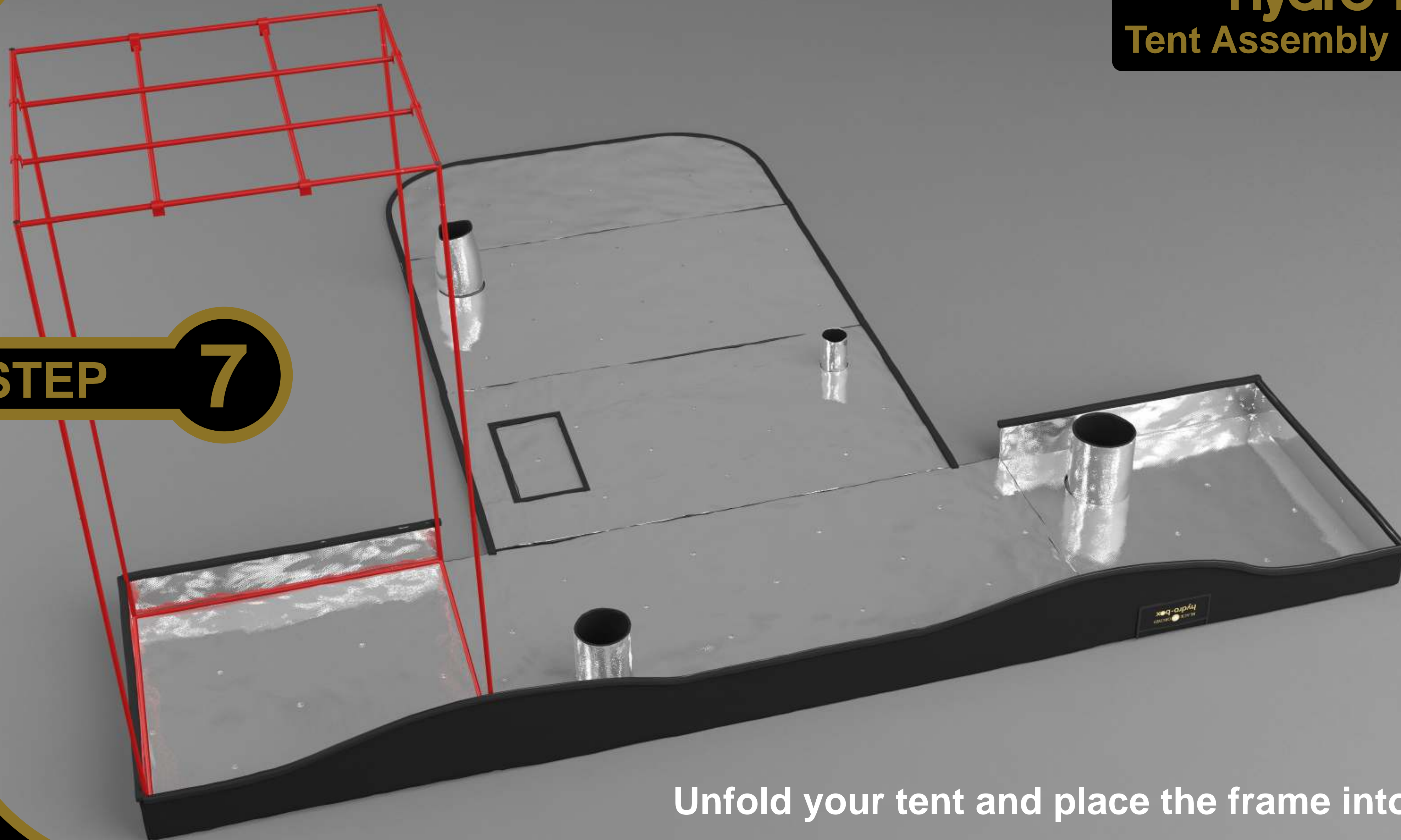


hydro-box™
Tent Assembly Instructions

STEP

7

Unfold your tent and place the frame into the base

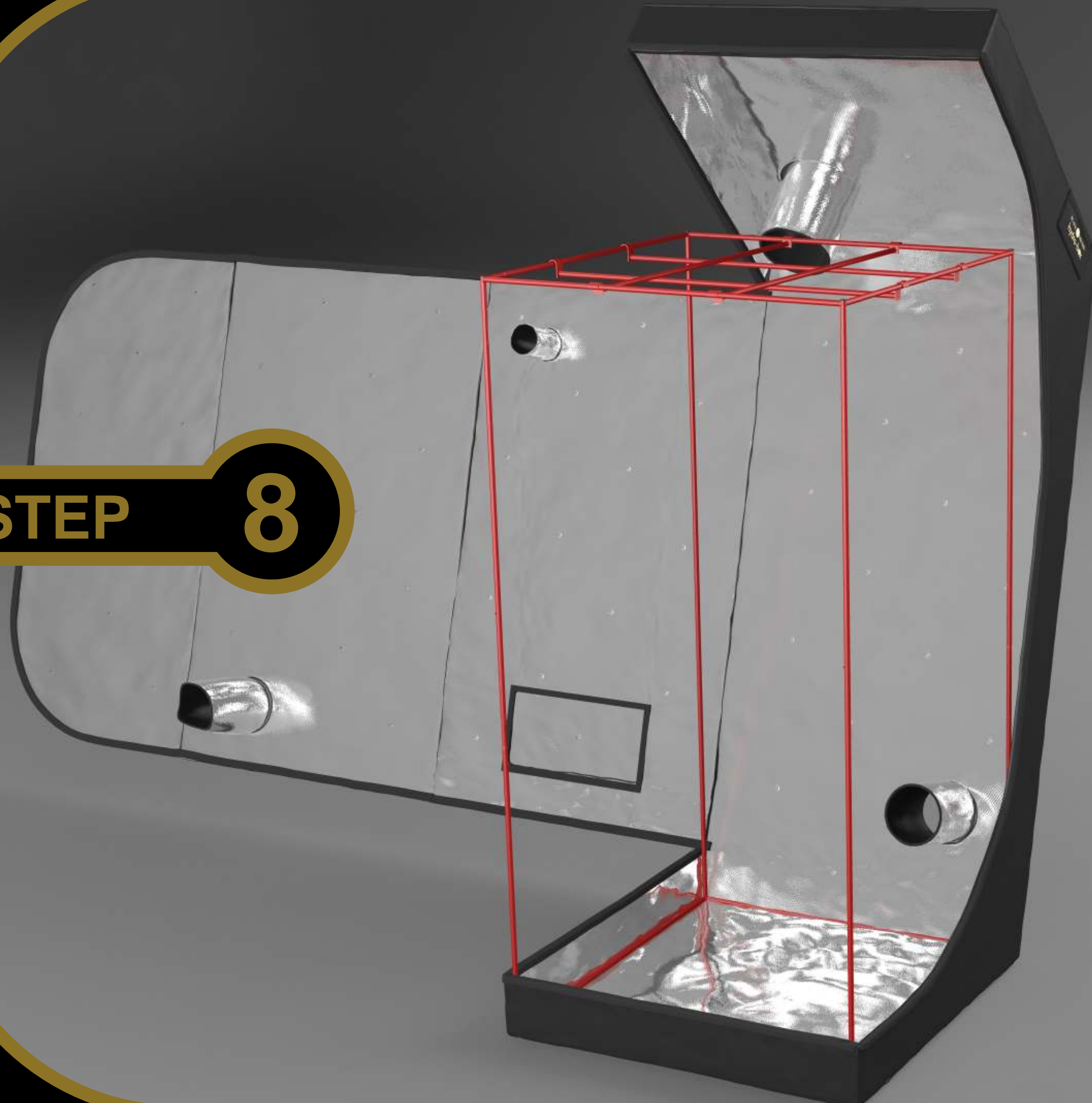


hydro-box™
Tent Assembly Instructions

STEP

8

Make sure the bottom of tent is fitted firmly around the frame before lifting the top of the tent onto the frame



Lift the top of the tent fabric up and carefully fit it around the top of the frame

STEP

9



hydro-box™ Tent Assembly Instructions



Next zip up the top and bottom zips all the way around sealing the tent up.

Start from the back of the tent with the top zip then use the bottom zip to complete the back, continue the same with the sides and finish with the front where both zips will meet up.

hydro-box™
Tent Assembly Instructions

STEP

10

Add the splash tray in the bottom once complete

